



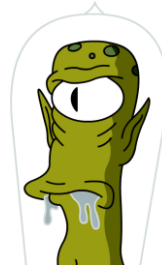
YES ON W
FOR SAFE AND
CLEAN WATER

Bruce Reznik
Los Angeles Waterkeeper
SoCal Water Dialogue, Oct 24 2018



Our Current Water Portfolio (*and what that means*)

LA's Current Water



Supplies



http://angeles.sierraclub.org/los_angeles_dependencies_imported_water



And what that means...

WATER

19.2%

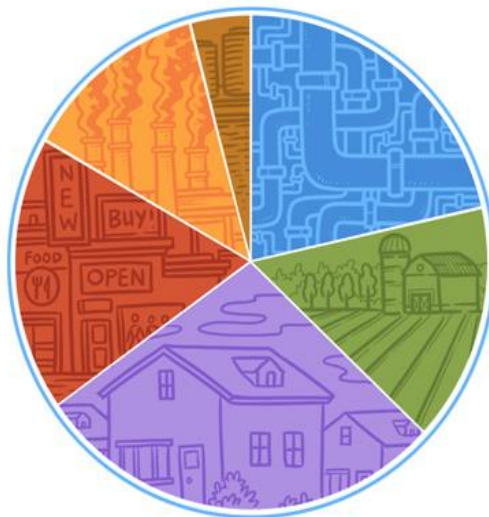
of all electricity consumption

30%

of non-utility related natural gas consumption

WATER-RELATED ENERGY USE

Nineteen percent of California's electricity goes to water-related uses



22% **Moving Water**
Water pumping, extraction,
transfer and distribution
- 10,300 GWh

15% **Farm Use**
Irrigation, crops, livestock
- 7,400 GWh

28% **Household/Residential**
Heating water, washing
clothes and dishes. Essentially
everything "after the meter."
- 13,500 GWh

18% **Commercial**
Cooking, heating and cooling
- 8,700 GWh

13% **Industrial**
Manufacturing sectors,
construction, mining, airport
usage
- 6,000 GWh

4% **Wastewater Treatment**
- 2,000 GWh





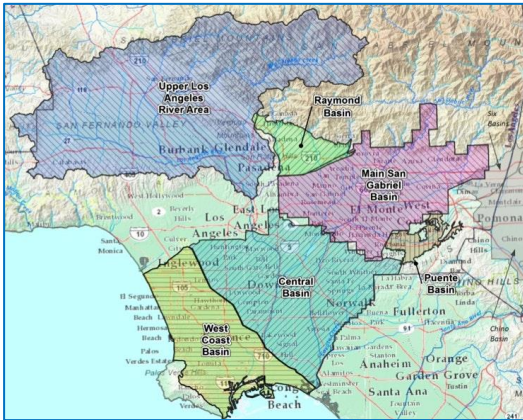
The importance of rainfall and runoff

Rainfall

=

Local Water Supply

- Rainfall flows through local rivers, creeks and streams
- Replenishes groundwater, an important source of drinking water for some communities



“The paved over paradise...”

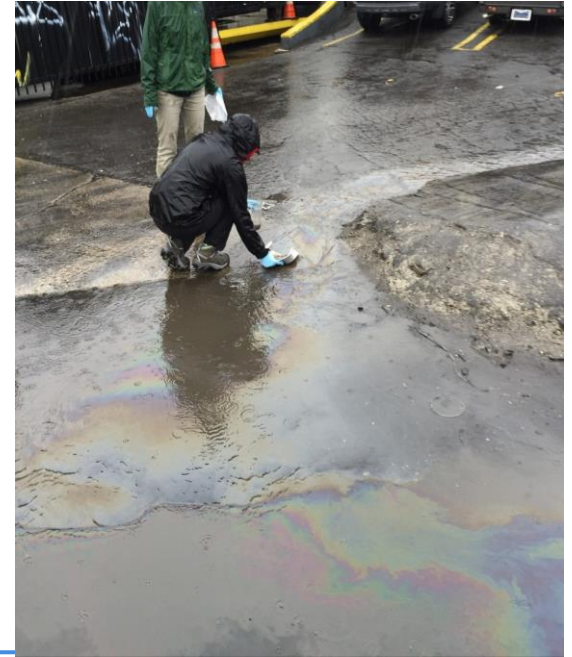


—

**Over
100 Billion
Gallons
of Water
Lost**



Runoff – It's all our problem!



And the results...

- Trash in our rivers, creeks, beaches and bays
- Wildlife harmed
- Beach closures
- Public health threats
- Economic impacts
- Wasted resource!



More Extreme Weather Conditions

- In LA County, impacts of recent extended drought widely felt
- Less frequent, but heavier rains





The Solution

The Solution

- Let's prioritize local water
- Use science, technology and nature-based solutions to protect and clean local water supply and the environment



Capture More Rainfall

- LA County captures enough rainfall each year to meet the needs of 1.5 million residents
- By investing in stormwater projects, we can double the water we capture



Measure W



- Goals:
 - Enhance regional water resilience
 - Increase water supply & improve water quality
 - Targeted tangible community benefits
-

What Is Measure W

- A parcel tax of **2½ cents per square foot of impermeable surface area** per year
 - Impermeable surfaces include pavement, concrete, or rooftops, etc.
- If approved, the estimated **average** property tax increase per homeowner would be around **\$83/year**
 - Find your estimated cost online at:
<Http://egisgcx.lsd.lacounty.gov/bos/m/?Viewer=safecleanwaterla>
- The proposed tax would raise around **\$300 million/year**, before credits & exemptions
 - The measure has no sunset provision, but must be reassessed in 30 years or sooner to determine continued need



REGIONAL PROGRAM

- 50% of Safe, Clean Water Program Funds (\$150 million/year) go to regional program
- Program funds distributed by (9) watershed area (with advisory committees)
- Funds awarded competitively
- Funding must be used for multi benefit projects: water quality + supply OR water quality + community benefit
- Projects must be part of WMPs/EWMPs
- Required set-aside for DACs



MUNICIPAL PROGRAM

- 40% of Safe, Clean Water Program Funds (~\$120 million/year) go back to cities
- Funding must be used for water quality programs and projects
- Provides local control to maximize ability for cities to address local stormwater needs



LA FLOOD CONTROL DISTRICT PROGRAM

- 10% of Safe, Clean Water Program Funds (\$30M/year) to 'Administer' the Safe Clean Water Program
- Create a technical assistance team (ID and prioritize most effective projects)
- Create watershed coordinator
- Fund scientific studies
- Review and validate requested credits
- \$\$ for stormwater education and job training



CREDIT PROGRAM

- A **credit program** to offset the tax hit for those that have made storm water improvements has been developed.
 - A **75% credit** of the tax assessment can be given for capturing storm water on-site
 - A **100% credit** is available if the property takes off-site storm water flows or reuses the captured stormwater



Parcels owned by government or non-profit organizations are **exempt** from the tax

Safe Clean Water Measure W

Good for:

- Our environment
- Our communities
- Our cities
- Our businesses
- Our economy
- Our FUTURE!





Measure W supporters include a broad range of civic leaders, environmental organizations, business leaders and community-based organizations including (partial list):

Los Angeles Mayor Eric Garcetti

Long Beach Mayor Robert Garcia

LA County Supervisor Janice Hahn

LA County Supervisor Sheila Kuehl

LA County Supervisor Mark Ridley-Thomas

LA County Supervisor Hilda Solis

Californians Against Waste

Central City Association

Communities for a Better Environment

Heal the Bay

LA League of Conservation Voters

LA Waterkeeper

LAANE

Long Beach Grey Panthers

Mujeres de la Tierra

Nature for All

NRDC

Pacoima Beautiful

San Gabriel Valley Council of Governments

The Nature Conservancy

TreePeople

Trust for Public Land

SUPPORTERS

Take Action!



Now is the time to get involved. We need your help reaching voters and securing 66.7% of Yes on W voters on November 6, 2018.

- **To read more, visit:**
<http://www.yesonwforcleanwater.com>.
- **Donate online:**
<https://secure.actblue.com/donate/safecleanwaterla>.
- **Endorse and sign up for campaign updates:**
<http://www.yesonwforcleanwater.com/endorse/>.
- **Learn more about LA County's Safe Clean Water program at:** <http://safecleanwaterla.org>.
- **For more information about the campaign, contact:** Lucy at lucy@sgacamp.com or Stephanie at dailysmith@gmail.com.



Questions?

Bruce Reznik

bruce@lawaterkeeper.org

310-394-6162 ext 100

